

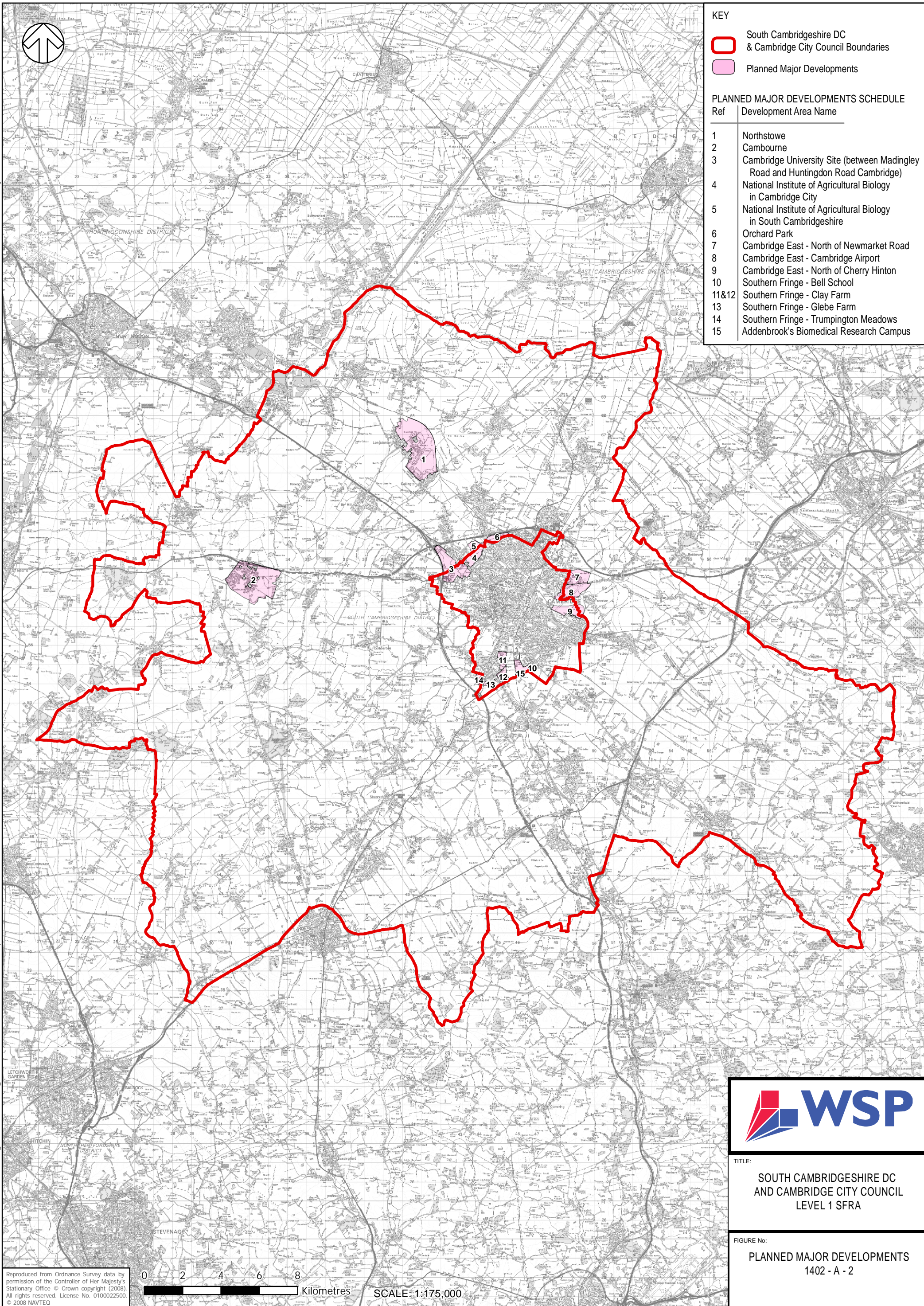


**KEY**

- South Cambridgeshire DC & Cambridge City Council Boundaries
- Planned Major Developments

**PLANNED MAJOR DEVELOPMENTS SCHEDULE**

Ref	Development Area Name
1	Northstowe
2	Cambourne
3	Cambridge University Site (between Madingley Road and Huntingdon Road Cambridge)
4	National Institute of Agricultural Biology in Cambridge City
5	National Institute of Agricultural Biology in South Cambridgeshire
6	Orchard Park
7	Cambridge East - North of Newmarket Road
8	Cambridge East - Cambridge Airport
9	Cambridge East - North of Cherry Hinton
10	Southern Fringe - Bell School
11&12	Southern Fringe - Clay Farm
13	Southern Fringe - Glebe Farm
14	Southern Fringe - Trumpington Meadows
15	Addenbrook's Biomedical Research Campus



Reproduced from Ordnance Survey data by permission of the Controller of Her Majesty's Stationary Office. © Crown copyright (2008). All rights reserved. License No. 0100022500. © 2008 NAVTEC



TITLE:  
SOUTH CAMBRIDGESHIRE DC  
AND CAMBRIDGE CITY COUNCIL  
LEVEL 1 SFRA

FIGURE No:  
PLANNED MAJOR DEVELOPMENTS  
1402 - A - 2